

The background features a stylized globe on the right side, with binary code (0s and 1s) overlaid on it. The globe is tilted and has a grid of latitude and longitude lines. The binary code is arranged in diagonal lines across the image. The overall color scheme is blue and green, with white text. There are also some abstract geometric shapes in the top left and bottom right corners.

EXPLORING U.S. MARKET ENTRY:

A GATEWAY TO THE CAPITAL
REGION'S CYBERSECURITY
ECOSYSTEM



BY NEXT YEAR ALONE, THE WORLDWIDE COST OF
CYBERCRIME IS ESTIMATED TO EXCEED
\$10 TRILLION ANNUALLY





Ascension posts \$1.1B net loss for 2024 after May cyberattack

The cyberattack at Ascension had far-reaching effects, forcing the health system to shut down pharmacies, divert ambulances, switch to manual record keeping and close critical systems at many of its 136 hospitals across its 18-state portfolio.



GLOBAL OUTAGES



BUSINESS AND SERVICES

Unable to operate due to computers crashing.



INFRASTRUCTURE HALTED

Commercial flights grounded, critical hospital care interrupted, and financial institutions unable to service clients.

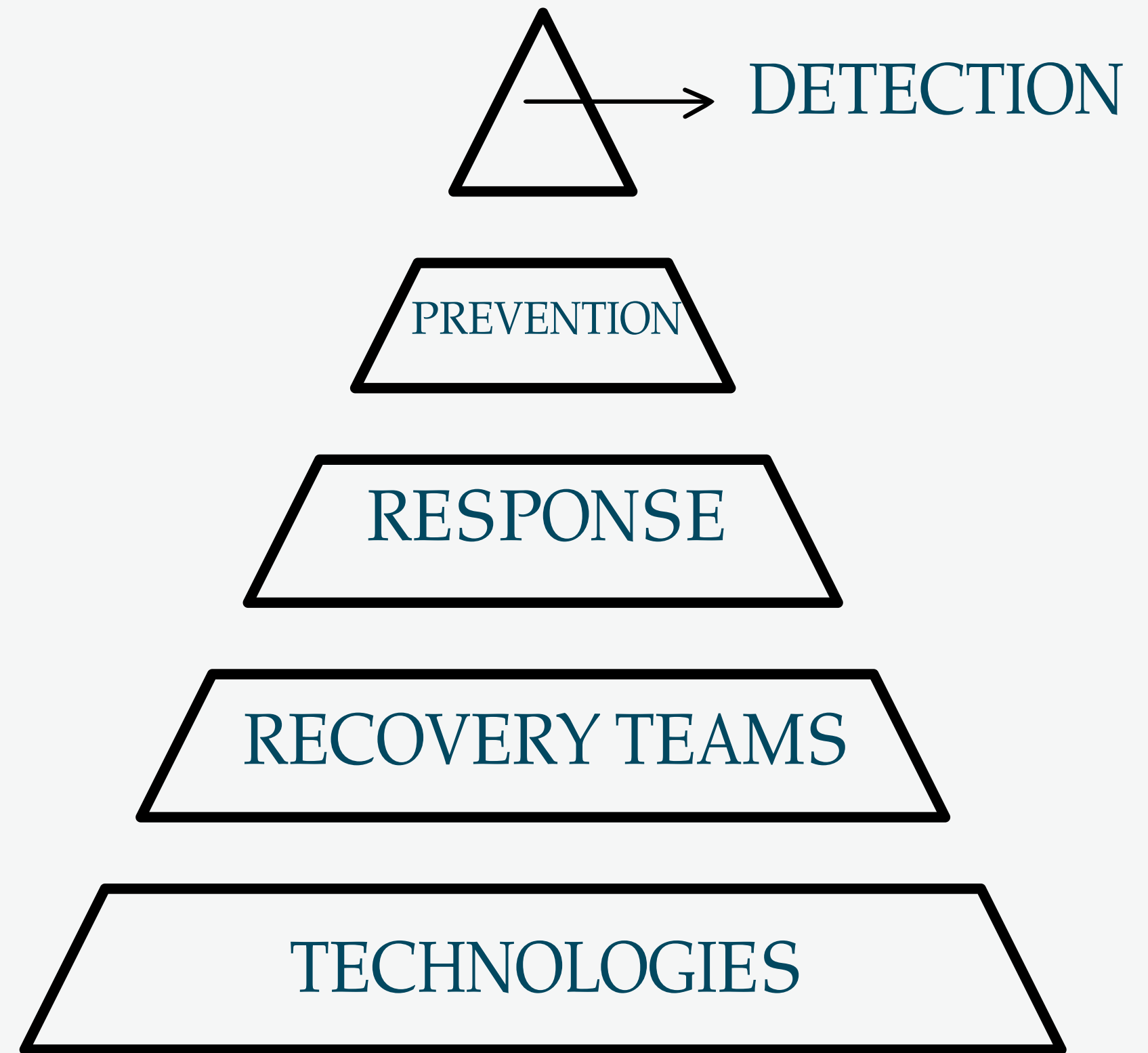


HIGHLIGHTED

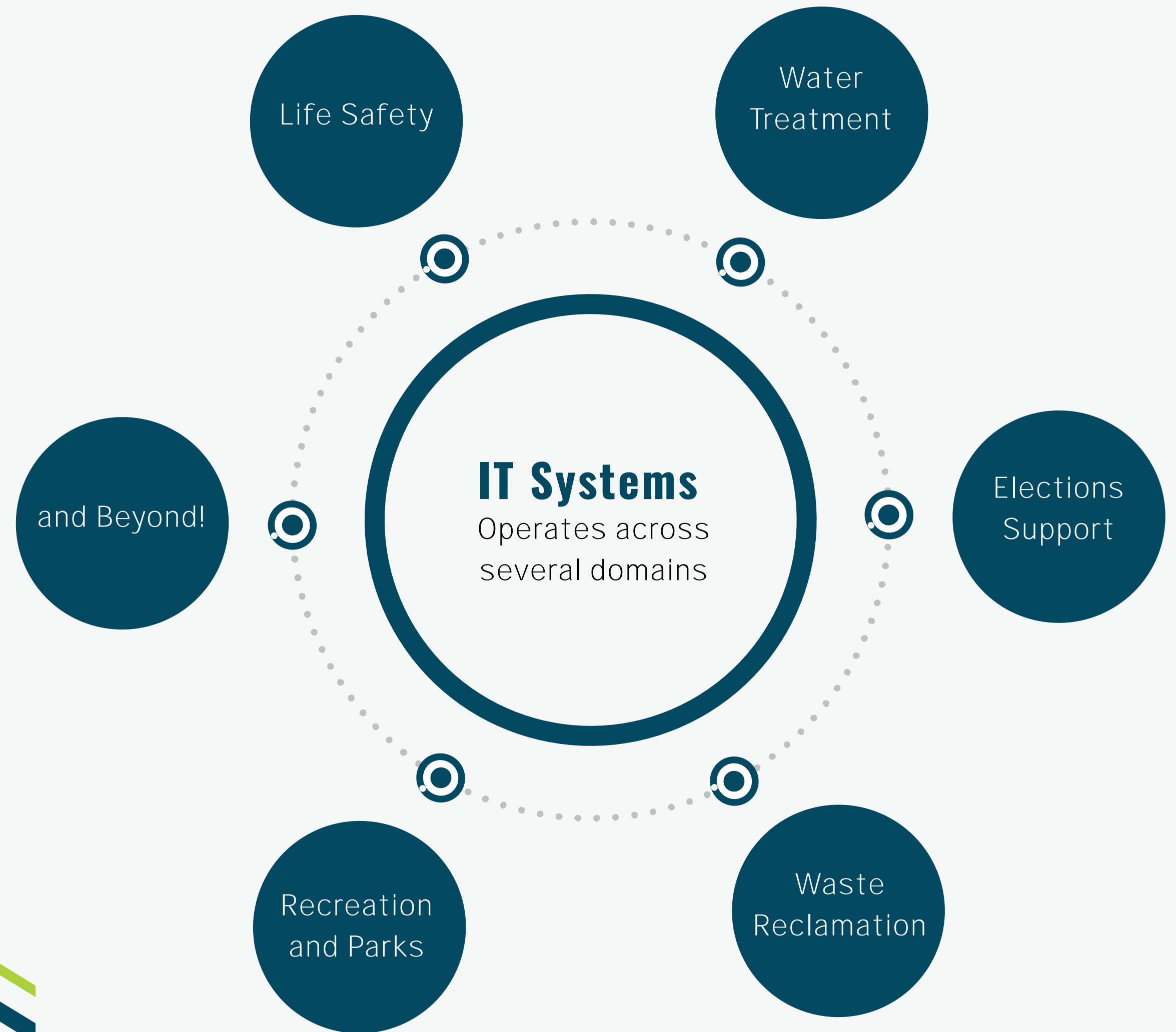
Global IT and cybersecurity vulnerabilities.



DEFENSE IN DEPTH STRATEGY



COUNTY GOVERNMENT OPERATIONS

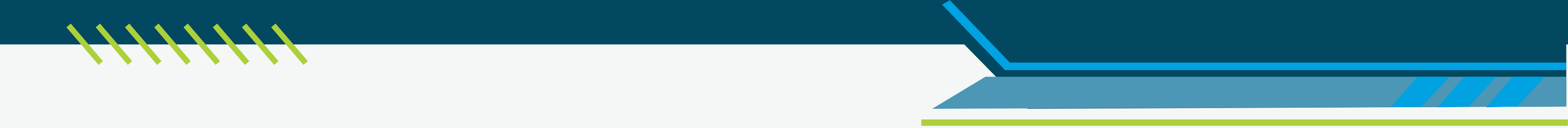


GLOBAL COOPERATION IS VITAL FOR CYBERSECURITY



HOWARD COUNTY, MARYLAND, USA





WHY HOWARD COUNTY?



HOME TO MORE THAN
335,000 PEOPLE



AVERAGE INCOME OF
\$168,000



Six Regional Parks



24 Community Parks



200 Miles of Trails



Seven Golf Courses



Five Lakes



Flourishing Quality of Life

FREE PUBLIC WI-FI Across Howard County



All 23 Columbia Association Pools



Columbia Lakefront



Western Regional Park



Howard County Fairgrounds

EXCEPTIONAL SCHOOL SYSTEM



LOCATION, EXPERTISE, INNOVATION AND COLLABORATION



CLOSE PROXIMITY

Easy access to national decision-makers, defense contractors and federal agencies.



FORT MEADE

Home to the National Security Agency (NSA) and U.S. Cyber Command.



BALT/WASH AIRPORT

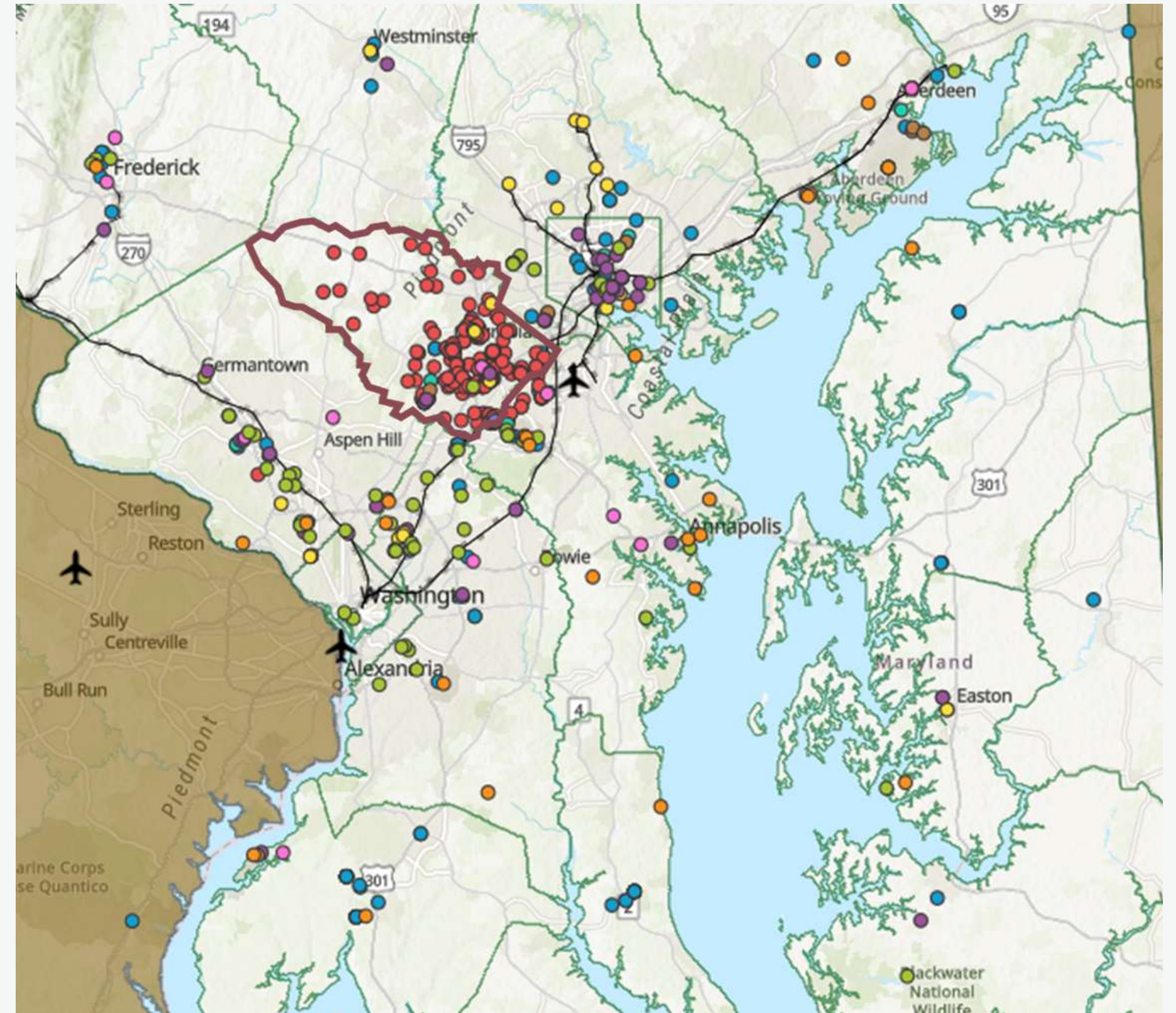
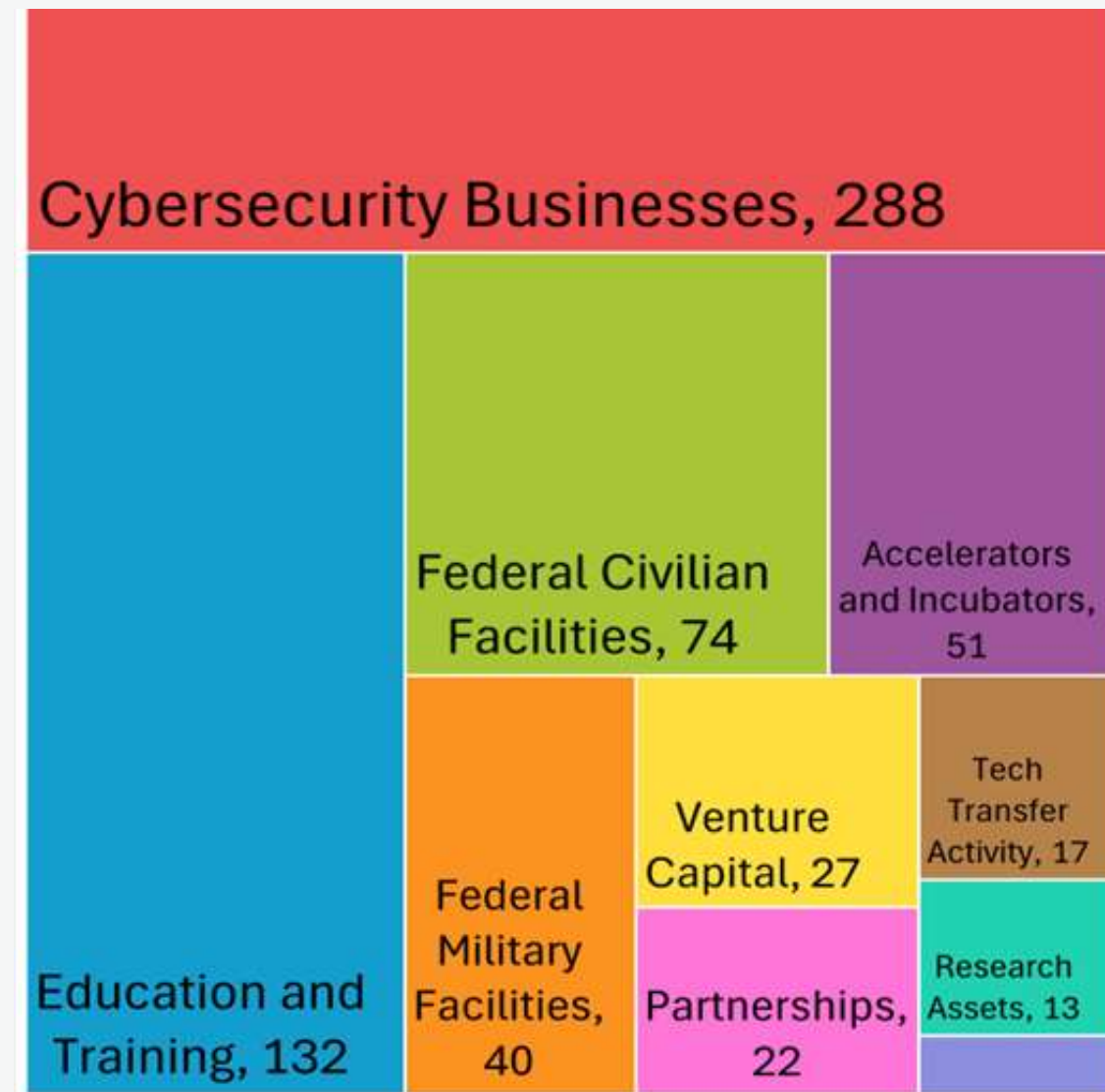
Offers global connectivity for business travel and facilitates the transport of goods and technology to and from the area.

Only jurisdiction in Maryland

Provides Wi-Fi to:

- ✓ All 78 HCPSS Schools
 - ✓ All six public libraries
 - ✓ All six 50+ centers
 - ✓ All six community centers
- 

CYBER CAPITAL OF THE WORLD





Hopr enables on-demand, verified-trust, ultra-secure application networking across clouds, organizations, and ecosystems.

Our Zero Trust and quantum-proof solutions form a future ready Cloud Native Automated Moving Target Defense (AMTD) around workloads, APIs, and data in transit.

Hopr easily and securely networks applications located in any environment, proactively disrupts cyber attacks, and strengthens cyber resilience.

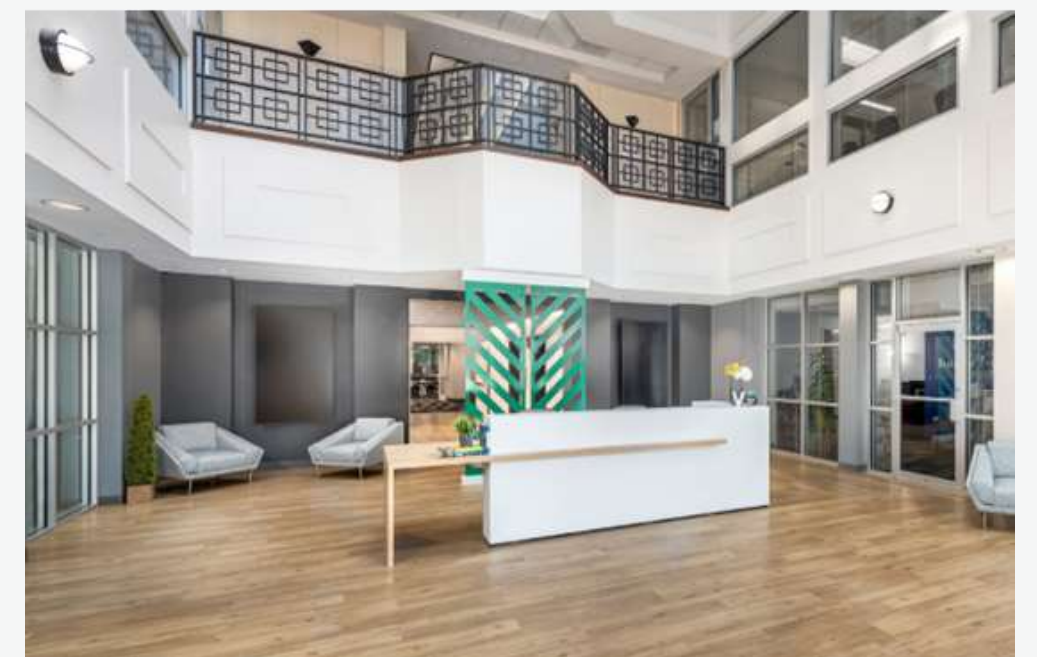


MARYLAND **Innovation center**

Supports more than 1,000 startups and entrepreneurs annually.

The MIC serves as a premier hub for business growth and innovation in cybersecurity:

- Offers co-working spaces, conference rooms, and incubation programs.
- Personalized mentorship, networking opportunities, and access to capital for growing businesses.



HOWARD COUNTY'S CYBER EXPERTISE



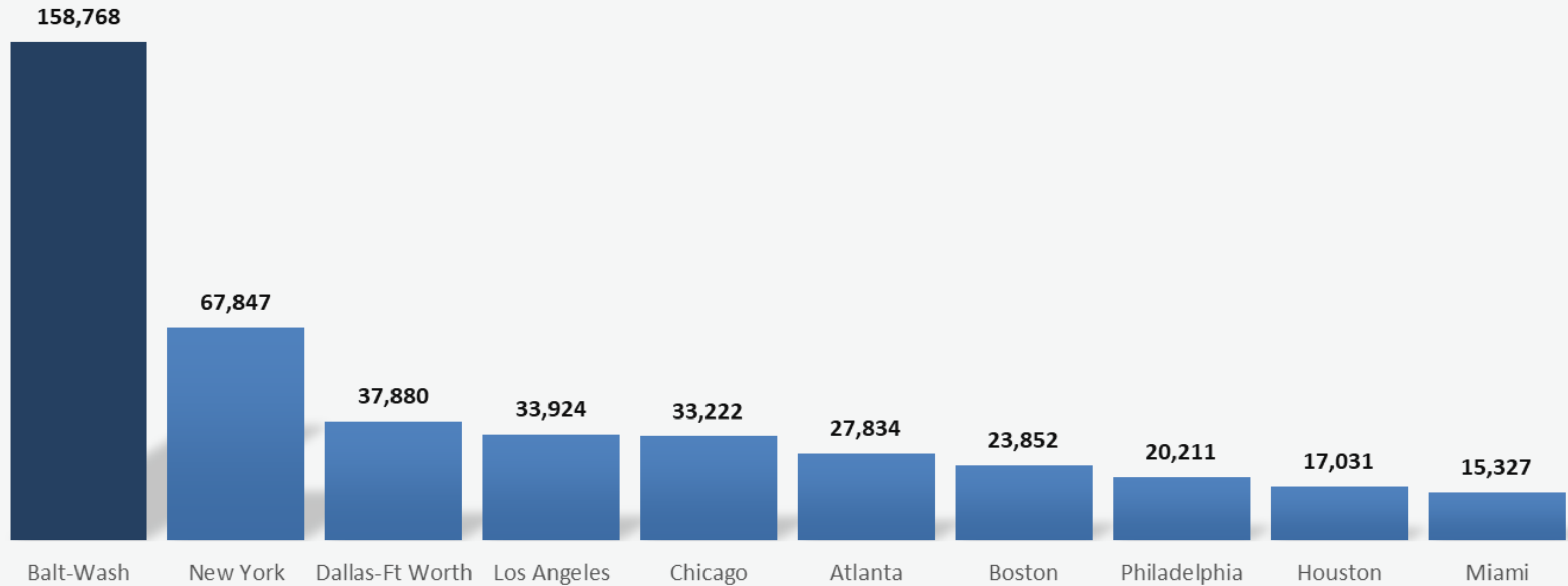
CYBER BUSINESSES IN HOWARD COUNTY



REGIONAL INSTITUTIONS

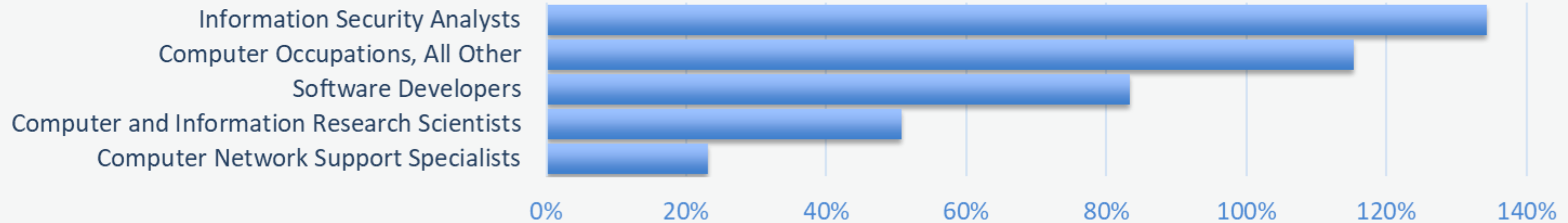


CYBER WORKERS IN THE 10 MOST POPULOUS U.S. METROPOLITAN AREAS

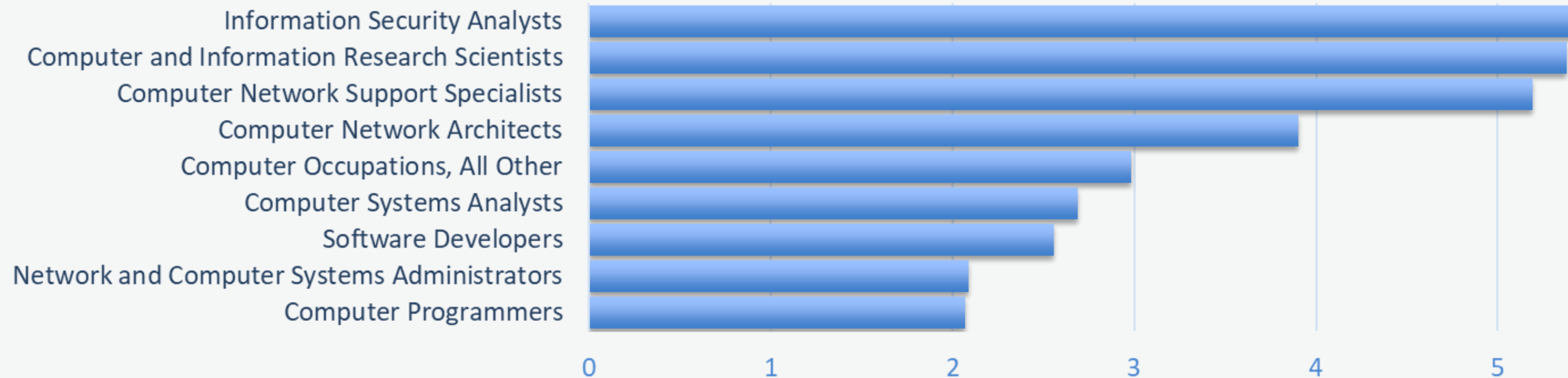


Occupation Growth 2013–23

Howard County Cyber-related Fields



Howard County Employment Concentration



CYBERSECURITY EDUCATION



HANDS ON EXPERIENCE

Provides students with real-world cyber defense scenarios.



FIRST CYBERSECURITY APPRENTICESHIP

Coached and mentored by industry experts, students are earning cyber certifications, while contributing to the business and earning a starting salary.



BECOMING FRONTLINE DEFENDERS

Graduates combat some of the most significant threats we face today.





Baltimore 'Tech Hub' designation means region could compete for billions in federal economic development funding

The hub is one of 31 designated across the country by the U.S. Department of Commerce. The designations are meant to spur investment in globally competitive emerging technologies and are a recognition of a region's potential for growth.

EQUITABLE TECHNOLOGY MODEL

“EQUITECH”

Develops predictive healthcare technologies that can support clinical decision-making, bioethics, personalized medicine, new biologics, and therapeutics.





WORKFORCE DEVELOPMENT & TRADES CENTER

When completed in 2026, this center will be a state-of-the-art facility, designed to provide students with hands-on experience in careers that are both growing and critical to our community.

MIC I3: INTERNATIONAL INNOVATION INITIATIVE

Offers virtual services such as:

- Mentorship
- Business resources
- Connections to potential clients and partners





**HOWARD COUNTY
INNOVATES.**

IT LEADS.





Leveraging local investments
to ensure Howard County's
economy is attractive on a
global scale

EXPLORING U.S. MARKET ENTRY:

A GATEWAY TO THE CAPITAL
REGION'S CYBERSECURITY
ECOSYSTEM

